

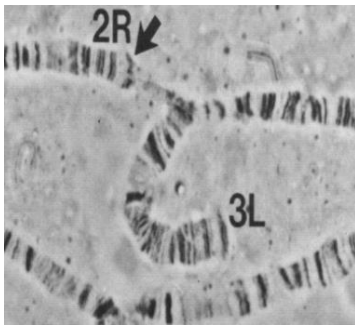
**B.Sc. SEMESTER V (H) under CBCS
ZOOA PRACTICAL
CC-12
F.M. 30
TIME: 1 HOUR 30 MINUTES**

Q1. A pure tall pea plant with round seeds were crossed with dwarf pea plant with wrinkle seeds. The F1 produced was selfed and produced 315 tall round, 108 dwarf round, 101 tall wrinkle and 32 dwarf wrinkle plants. Find the goodness of fit of the given data for the ratio 9:3:3:1. (10)

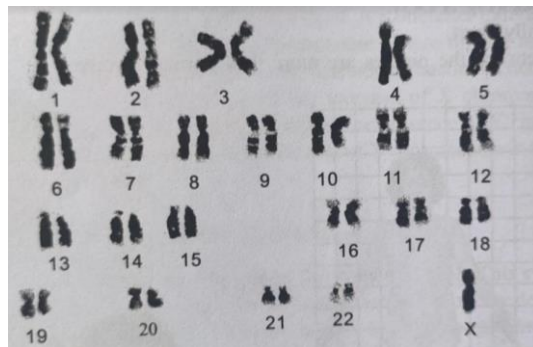
(Hypothesis 2, Calculation 5, Comment on result 2, Inference 1)

Q2. Identify the given chromosomal aberration. Mention its cause and effect.

(2+2+1) x 2= 10



(A)



(B)

Q3. Describe the given pedigree along with analysis and inference. (3+6+1 =10)

