

B.Sc. SEMESTER III (H) under CBCS

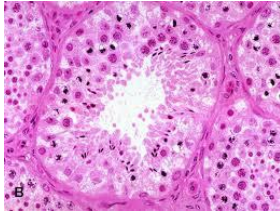
ZOOA PRACTICAL

CC-6

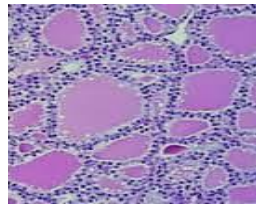
F.M. 30

TIME: 1 HOUR 30 MINUTES

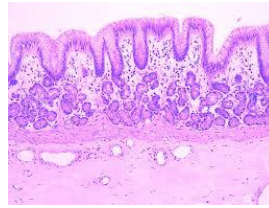
Q1. Identify the following histological sections with four distinct features of each. $(1+4) \times 4 = 20$



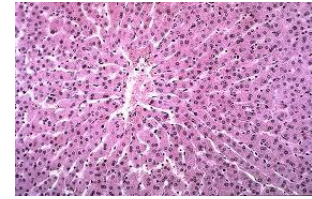
Section A



Section B



Section C



Section D

Q2. Write the procedure for preparation of buccal smear. Draw and label the observation under microscope. $6+2+2$