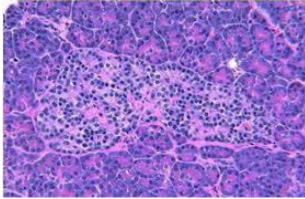
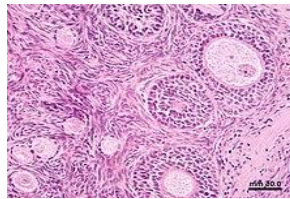


**B.Sc. SEMESTER V under CBCS
ZOOA PRACTICAL
DSE B1
F.M. 30
TIME: 1 HOUR 30 MINUTES**

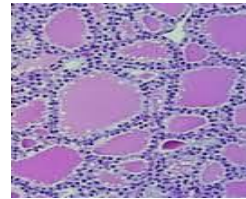
Q1. Identify the following histological sections with four distinct features of each. (1+4) x3 = 15



Section A



Section B



Section C

Q2. Write the procedure of H-E staining. Mention the significance of the stain used in this process. 5+2

Q3. Write the procedure of formation of paraffin block from a tissue kept in Bouin's fluid for making thin sections using microtomy. 8